



Westchester
Community College

State University of New York



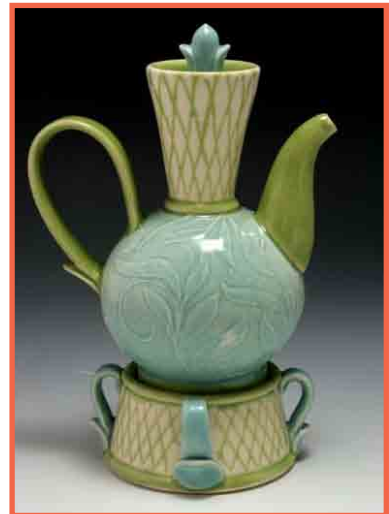
**Saturday, May 1, 2010
9:30am - 3:30pm**

Surface Decorations for Ceramics

Instructor: Brenda Quinn

This workshop will cover a range of techniques used to create various surface effects. We will cover techniques with wet, leather hard, bone dry clay, and bisque ware. Techniques such as scraffito, mashima, carving, slip painting, stencils, image transfer, simple printing techniques, glaze inlay, and wax resist will be discussed and demonstrated. **Fee: \$85. Ref.#A509**

Brenda Quinn attended Tyler School of Art, Temple University, where she received a BFA in ceramics. Brenda then went on to receive her MFA in ceramics from Southern Illinois University Carbondale. She currently lives, works, and teaches in New York.



WESTCHESTER
COMMUNITY
COLLEGE

CENTER FOR THE ARTS

WESTCHESTER COMMUNITY COLLEGE CENTER FOR THE ARTS
Westchester County Center, 196 Central Avenue, White Plains, NY 10606

914-606-7500 • waw@sunywcc.edu